

NAA: D1051, FOLDER 13B DRAWING 4

Series number: D1051

Control symbol: FOLDER 13B DRAWING 4

Barcode: 31730995

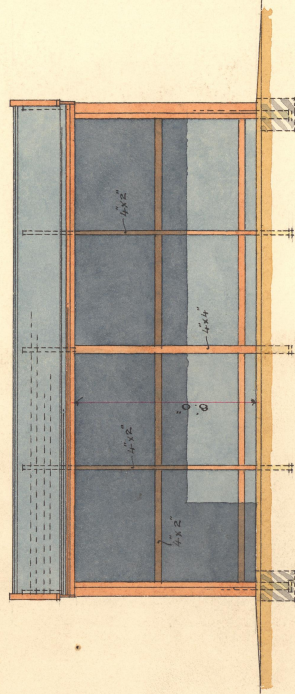
Number of pages: 1

Title: Farina (later Government Gums) post office and telegraph station - new stable and cart shed - plan elevation and section - 1915

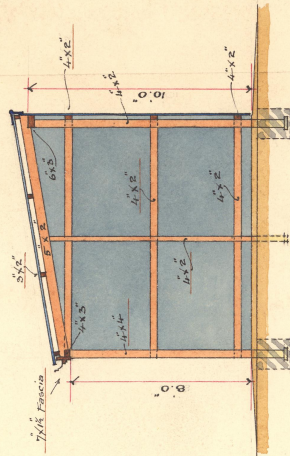
Copies of this record are provided for research or study purposes. Before making use of the material for other purposes (for example publication) please refer to information on copyright obligations and citing archival records available on our website at www.naa.gov.au.

4

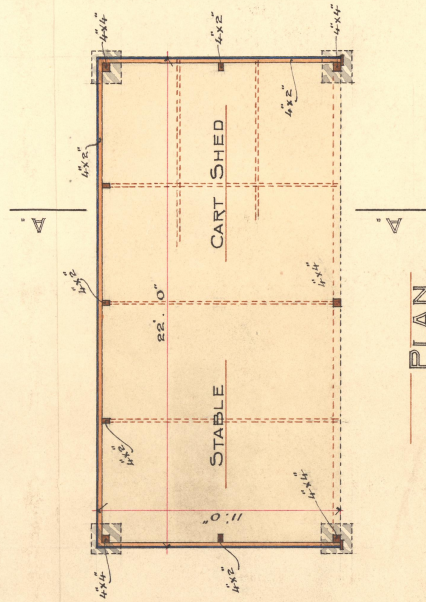
G. R.
OFFICE OF THE
SUPERINTENDENT OF
PUBLIC BUILDINGS,
ADELAIDE.



FRONT ELEVATION



SECTION A.A.



PLAN

POST OFFICE FARINA
NEW STABLE & CART SHED

(Scale 4 Feet to an inch)

A. J. L.
23/9/15

SUPERINTENDENT OF PUBLIC BUILDINGS.